



SILVER HELP

JOIN HAND
RISE TOGETHER

WELCOME TO THE SILVER HELP

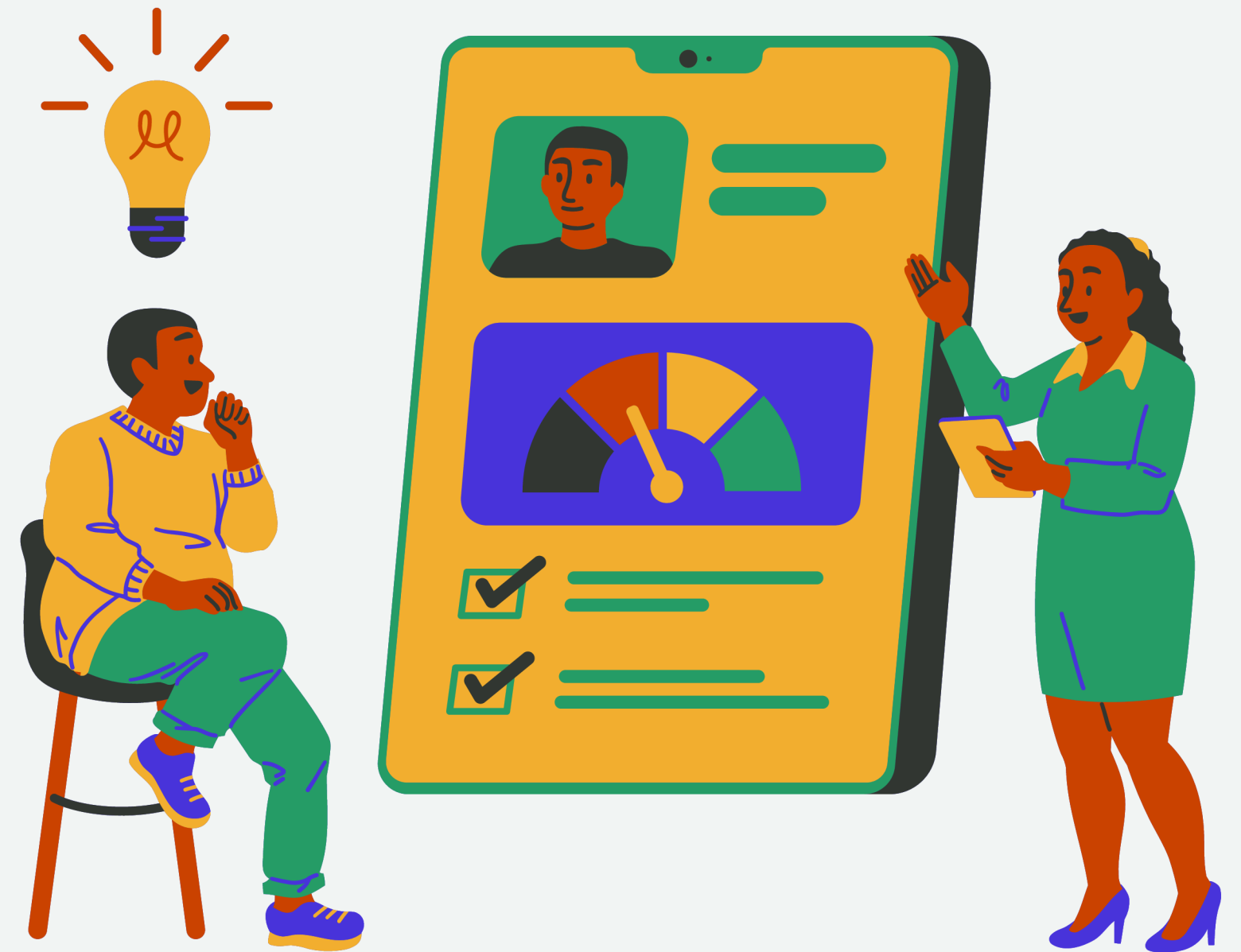
www.thesilverhelp.com



About Us

Silver Help is a donation-based helping plan created to uplift individuals through a system of mutual support and opportunity. Our platform connects people who are willing to help with those in need, forming a strong network of trust and financial cooperation.

Founded with the vision of empowering people from all walks of life, Silver Help offers an organized system where contributions circulate to support others and, in turn, bring returns to the contributors. Our platform operates on simple yet effective principles: transparency, fairness, and sustainability.



Vision & Mission

Vision

To build a trusted global community where individuals uplift each other through structured financial support, creating pathways to economic freedom and collective growth.

Mission

- To provide a transparent and secure platform for donation-based income opportunities.
- To empower individuals through community-driven support systems.
- To promote ethical giving while ensuring fair and sustainable returns.



Our Values

Silver Help is more than a donation system—it's a network of people uplifting one another. We foster respectful, supportive connections and encourage mutual encouragement, because real impact happens when we help together. Add little bit of content more. We operate with complete openness in every transaction, matching process, and community update. By sharing clear package details, fees, and timelines, we build trust and give every member full visibility into how their contributions and returns are handled. Silver Help is more than a donation system—it's a network of people uplifting one another.



Overview

A community-driven Gifting/Donation Plan where members support one another financially.

- Upon joining, each Networker makes a Pay Help (PH) contribution.
- After fulfilling PH, the Networker becomes eligible to Get Help (GH) according to plan rules.
- This cycle of giving and receiving ensures continuous support across the network.
- Widely adopted and trusted across the Indian region.



- PH (Pay Help): Your initial contribution to the community.
- GH (Get Help): The assistance you receive from fellow Networkers once PH is complete.

Our Packages

Basic Package

Rs. 4000 + Rs. 1000 pin

Standard Package

Rs. 8000 + Rs. 2000 pin

Premium Package

Rs. 24000 + Rs. 6000 pin



Basic Package

Investment Plan
Rs. 4000 + Rs. 1000 pin =
Rs. 5000

- Get 1st link ₹4,000 credited automatically after 11 days of your investment
- Get 2nd link of ₹4,000 on 22th day. If you make 2 direct or 2x business within 24hrs, you are eligible for 2nd link on 12th day

Standard Package

Investment Plan
Rs. 8000 + Rs. 2000 pin
Total = Rs. 10000

- Get 1st link ₹8,000 credited automatically after 11 days of your investment
- Get 2nd link of ₹8,000 on 22th day. If you make 2 direct or 2x business within 24hrs, you are eligible for 2nd link on 12th day

Premium Package

Investment Plan
Rs. 24000 + Rs. 6000 pin
Total = Rs. 30000

- Get 1st link ₹24,000 credited automatically after 11 days of your investment
- Get 2nd link of ₹24,000 on 22th day. If you make 2 direct or 2x business within 24hrs, you are eligible for 2nd link on 12th day

Types Of Income

Working Income

Non-Working
Income

Booster Income



Working Income

Income generated by actively growing and supporting the community through direct actions.

- Referral Commissions: Earn a fixed fee for every new Networker you bring in.
- Performance Bonuses: Additional rewards for hitting milestone referrals.
- Team Matching: A percentage of your direct referrals' GH earnings flows up to you.



Non-Working Income



10-Day Payout: Credited precisely 10 days after your PH contribution clears.

10× Return: Receive 10× your package value once GH is processed.

Booster Income

- Level 1: Make 5× direct business volume or 5 active directs within 24 hrs earn 1 extra help links.
- Level 2: Make 10× direct business volume or 10 active directs within 5 days earn 3 extra help links.
- Level 3: Make 25× direct business volume or 25 active directs within 10 days earn 7 extra help links.
- Level 4: Make 50× direct business volume or 50 active directs within 15 days earn 15 extra help links.
- Level 5: Make 100× direct business volume or 100 active directs within 20 days earn 35 extra help links.



Bonanza

- Active Direct Business of Rs.2.5 Lakh and Active Team Business of Rs.7.5 Lakh– Gets Mobile reward.
- Active Direct Business of Rs.10 Lakh and Active Team Business of Rs.40 Lakh– Gets Bullet bike reward.
- Active Direct Business of Rs.30 Lakh and Active Team Business of Rs.1.20 Crore– Gets Breeza car reward.
- Active Direct Business of Rs.75 Lakh and Active Team Business of Rs.3 Crore– Gets Thar Rox reward.



Terms & Conditions

- Your Pay Help (PH) package is activated only after full payment and PIN verification.
- Activation must occur within 48 hours of registration or the package will be cancelled.
- Non-Working Income: Automatically credited 10 days after PH confirmation.
- Working Income: Paid within 30 hours of qualifying referral or performance action.
- Referral links are unique and non-transferable.



Contact Us



www.thesilverhelp.com



Info@thesilverhelp.com



Thank You

www.thesilverhelp.com